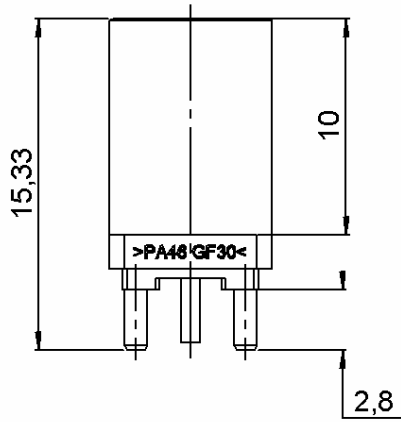


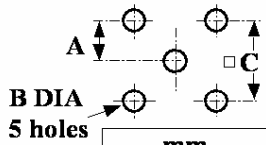
STRAIGHT PCB RECEPTACLE

R197.150.B07

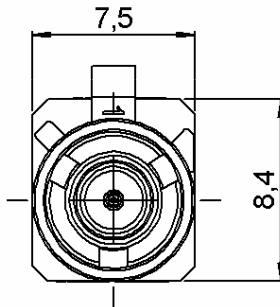
Series : **SMB**
CARLOCK



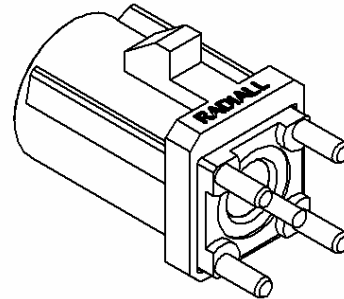
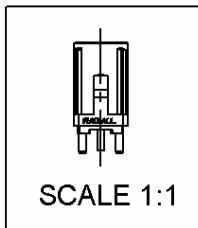
PANEL CUT OUT



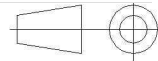
	mm	
	Maxi	mini
A	2.59	2.49
B	1.4	1.3
C	5.16	5



CODING B



All dimensions are in mm.



COMPONENTS	MATERIALS	PLATING (µm)
BODY	BRASS	TIN 3 OVER NICKEL 2
CENTER CONTACT	BRASS	GOLD 0.5 OVER NICKEL 2
OUTER CONTACT	-	-
INSULATOR	PTFE	-
GASKET	-	-
OTHERS PARTS	PA 46 GF30 (STANYL TE200F6) Color	-
-	WHITE(RAL9001)	-
-	-	-
-	-	-

Issue : 0648 C

In the effort to improve our products, we reserve the right to make changes judged to be necessary.



STRAIGHT PCB RECEPTACLE

R197.150.B07

Series : **SMB**
CARLOCK

PACKAGING

SPECIFICATION

Standard	Unit	Other
100	'W' option	Contact us

QS9000 A 00

ELECTRICAL CHARACTERISTICS

ENVIRONMENTAL

Impedance	50	Ω
Frequency	0-4	GHz
VSWR	1.05* + 0,0080	x F(GHz) Maxi
Insertion loss	0.03*	$\sqrt{F(GHz)}$ dB Maxi
RF leakage	- (57)	- F(GHz)) dB Maxi
Voltage rating	500	Veff Maxi
Dielectric withstanding voltage	1000	Veff mini
Insulation resistance	1000	M Ω mini

Operating temperature	-40/+110	$^{\circ}$ C
Hermetic seal	NA	Atm.cm3/s
Panel leakage	NA	

OTHER CHARACTERISTICS

Assembly instruction

Others :

* COAX TRANSMISSION LINE ONLY

MECHANICAL CHARACTERISTICS

Center contact retention		
Axial force (before soldering)	5	N mini
Axial force (after soldering)	10	N mini
Torque	NA	N.cm mini
Recommended torque		
Mating	NA	N.cm
Panel nut	NA	N.cm
Mating life	100	Cycles mini
Weight	1,2300	g

Issue : 0648 C

In the effort to improve our products, we reserve the right to make changes judged to be necessary.



RADIALL®